

# Symphony™

AROA ECM™

From stalled... to skin

**Symphony** is a unique combination of two proven technologies with synergistic outcomes.¹



## Symphony is indicated for use in the management of the following wounds²:

- Partial and full-thickness wounds
- Pressure ulcers
- Venous ulcers
- Diabetic ulcers
- Chronic vascular ulcers
- Tunneled / Undermined wounds
- Surgical wounds (donor sites/grfts, post-Moh's surgery, post-laser surgery, podiatric, wound dehiscence)
- Trauma wounds (abrasions, lacerations, second-degree burns, and skin tears)
- Draining wounds

## 1 Wound Bed Preparation

- Prepare the wound bed by cleansing, irrigation and, if necessary, perform clinically appropriate debridement (sharp, ultrasonic, mechanical, or other) to ensure the wound is free of debris, necrotic tissue or infected tissue.
- **Symphony** can tolerate a contaminated field, but should not be used in presence of an uncontrolled clinical infection.



## 2 Product Selection

**Symphony** should be stored at room temperature in a clean and dry area. Do not use the device if the temperature dot on the carton indicates that exposure to temperatures exceeding 140°F has occurred.

- Select a **Symphony** device that is slightly larger than the wound.
- Remove the tray from inside the carton and ensure that the tray is intact and undamaged.



- First peel back the foil lid from the tray. The foil lid can be peeled from either corner.



- Then peel back the second white lid, which provides a sterile seal for the **Symphony** device.



- If the device needs to be trimmed to size, consider trimming first before hydrating.



### 3 Hydration

- Hydrate with sterile saline or Ringers solution.
- **Symphony** can be hydrated in the tray it is supplied in or placed in the wound and hydrated in situ. This typically takes 30 seconds to one minute.
- **Symphony** will transform into a soft conforming sheet.



### 4 Application

- Place **Symphony** in intimate contact with underlying tissue and structures. **Symphony** will conform to the wound bed.
- At the discretion of the user, **Symphony** can be secured by mechanical means. If suturing or stapling, ensure that all layers of the device are secured.

*Example of **Symphony** sutured in place, and secured with Steri-Strips®*



### 5 Cover and Secure

- It is recommended to cover **Symphony** with a petrolatum or silicon-based non-adherent dressing (e.g. Xeroform®, Adaptic™ or Mepitel®).
- Secondary dressings (including foams), NPWT or bolster dressings can be used in conjunction with **Symphony** dependent on the level of exudate, patient factors, wound site and institutional protocols.
- Based on wound type and treatment objectives, utilize adjunctive therapies such as offloading and compression therapy.

*Example of **Symphony** covered with a non-adherent dressing.*



### 6 Dressing Care and Symphony Reapplication

- The secondary dressing can be changed as per standard of care considering exudate levels.
- It is recommended to inspect **Symphony** for integration after 7 days.
- Carefully cleanse the wound in accordance with established procedures.
- Look for integration of **Symphony** into the wound bed. It is not necessary to remove residual **Symphony** but can be debrided at the user's discretion.
- Once the device has integrated into the wound, reapply **Symphony** as needed until the wound has re-epithelialized.

**CASE EXAMPLE** SHOWING INITIAL STAGES OF SYMPHONY APPLICATION AND REAPPLICATION IN A CHRONIC STAGE IV PRESSURE INJURY OF HEEL

DAY 0



- Following serial debridements, offloading and infection management, first application of **Symphony** performed.
- **Symphony** hydrated and secured with Steri-Strips® directly over exposed bone.

DAY 7



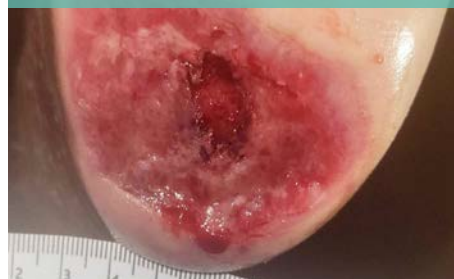
- **Symphony** is integrating, and residual product noted.
- Evidence of budding vascularized granulation tissue.
- Only loose residual product was debrided, and the rest left to continue integrating.
- Non-contact layer and secondary dressing was then reapplied.

DAY 14



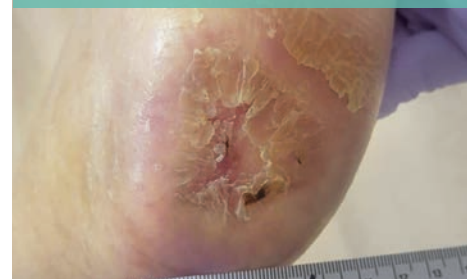
- **Symphony** integrated in wound bed.
- Vascularized granulation tissue beginning to cover exposed bone.
- **Symphony** reapplied.

DAY 28



- **Symphony** integrated into wound bed.
- Robust neodermis covers exposed bone.
- Significant depth-fill and contour restoration noted.
- **Symphony** reapplied.

Wound Healed



- Following 3 applications, healing confirmed with no complications.

1. Smith, M. J., S. G. Dempsey, R. W. Veale, C. G. Duston-Fursman, C. A. F. Rayner, C. Javanapong, D. Gerneke, S. G. Dowling, B. A. Bosque, T. Karnik, M. J. Jerram, A. Nagarajan, R. Rajam, A. Jowsey, S. Cutajar, I. Mason, R. G. Stanley, A. Campbell, J. Malmstrom, C. H. Miller and B. C. H. May (2021). "Further structural characterization of ovine forestomach matrix and multi-layered extracellular matrix composites for soft tissue repair." J Biomater Appl 36(6): 996-1010.

These recommendations are designed to serve only as a general guideline. They are not intended to supersede institutional protocols or professional clinical judgment concerning patient care.

**RX Only.** Prior to use, be sure to read the entire Instructions For Use package insert supplied with the product. Product information contained herein is for US customers.

**For more information on Symphony™, please call 1-877-627-6224 or email [customerservice@aroa.com](mailto:customerservice@aroa.com).**

Xeroform®, Adaptic™, Mepitel® and Steri-Strips® are trademarks and property of their respective owners.

**AROA™, Aroa Biosurgery™, Symphony™ and AROA ECM™** are trademarks of Aroa Biosurgery Limited.